

WHITE SWAN®
BRANDS
• SINCE 1916 •

August 2017



new at a *glance*



Five star
Chef Apparel



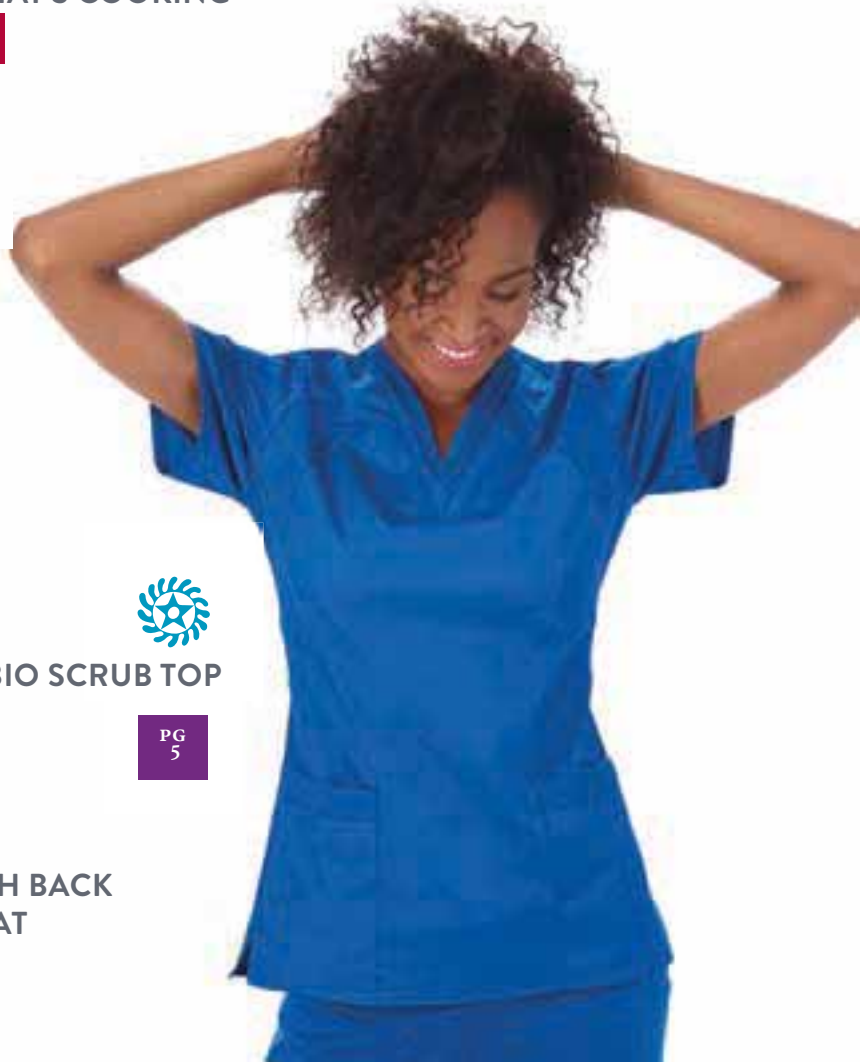
PRINTS

PG
20



GREAT CATCH &
WHAT'S COOKING

PG
100



BIO SCRUB TOP

PG
5










NEW MESH BACK
CHEF COAT

PG
94



Table of Contents

	BIO STRETCH	04
	BIO PRINTS	20
	FUNDAMENTALS	29
	META LABWEAR	58
	FIVE STAR CHEF	92
	A.M.P.S	120
	EMBROIDERY	125



➤ COTTON

made with ring-spun cotton – the strongest cotton available. Allows for comfort & breathability. Allows for beautiful & rich colors

55%



➤ POLYESTER

allows for easy care
minimizes wrinkles
add strength
high color retention

42%



➤ SPANDEX

allows for the ultimate in comfort & stretch

3%



BIO was designed to pay tribute to the healthcare professional who is dedicated to caring for, protecting and saving lives.

We are constantly evaluating your working needs and design around these issues. Long hours, the long days, the long to-do lists, the bending, the stretching, the lifting; it's – The BIO Life.

The perfect fit, styles, and stretch fabric that allow you to rise to the challenge of being a nurse. BIO brings you all the details you want with all the flexibility you need.





Breathable Mesh
Back Detail



NEW!

19098

BIO Mesh Top

Length: 26"

Features:

Set-In Sleeves / **2 Pockets:** 2 Roomy
Mesh Trimmed Pockets / Mesh Details
on Neckline, Front Yoke, Pocket Top
and Center Back / Side Vents

55% Cotton

42% Polyester

3% Spandex

STRETCH

Sizes: XXS-5X



015 Black



054 New Navy



1054 Pewter



046 Ceil



1031 Galaxy Blue



064 Royal





Athletic inspired front and back yoke



See page 12 for matching pant!

19075
BIO Sporty
V-Neck Top






Length: 25 1/2"

Features:

Set-In Sleeves / Athletic Inspired Front and Back Yoke with Twill Tape Detail / **2 Curved Top Pockets** Side Vents

55% Cotton
42% Polyester
3% Spandex
STRETCH

Sizes: XXS-5X

-  **064** Royal
-  **015** Black
-  **1054** Pewter
-  **054** New Navy
-  **1031** Galaxy Blue





“ I love BIO uniforms because they’re soft, breathable, and they last!
-Caitlyne Shires ”

19027
Non-Contrast
Modern Wrap


Length: 26"






Features:

Princess Seams / Set-In Sleeves with Mini Welt Pockets on Left Sleeve /
3 pockets: 2 Roomy Patch Pockets Plus Outer Welt Pocket / Side Vents

55% Cotton
42% Polyester
3% Spandex
STRETCH

Sizes: XXS-5X

 **Non-contrast top is essential**

-  **064** Royal
-  **015** Black
-  **1054** Pewter
-  **054** New Navy
-  **1031** Galaxy Blue



“ BIO Uniforms are soft and comfy while remaining totally stylish!
-Wendy Danielle ”

19022
BIO Modern Wrap

Length: 26"

Features:

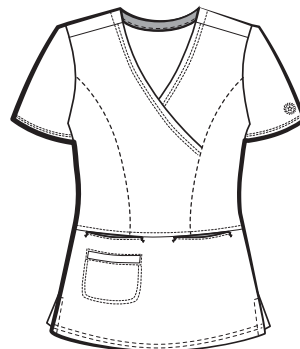
Set-In Sleeves / Princess Seams / **3 Pockets:**
 Two Lower On Seam Pockets Plus Outer Welt
 Pocket / Side Vents

55% Cotton
42% Polyester
3% Spandex
STRETCH

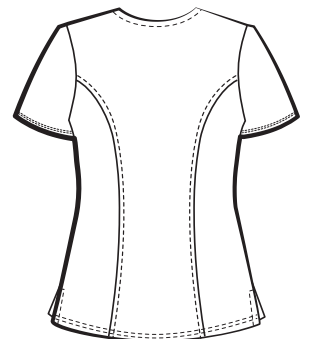
Sizes: XXS-5X

- | | |
|---|--|
|  011 White |  054 New Navy |
|  016 Red |  046 Ceil |
|  1054 Pewter |  1011 Azalea |
|  066 Turquoise |  064 Royal |
|  1031 Galaxy Blue |  038 Wine |
|  080 Caribbean |  1255 Latte |
|  092 Eggplant |  015 Black |
|  1264 Blue Iris |  015 Black* |

*For Black with Red Combo use Style 99022



Front



Back





19021 BIO Angle V

Length: 26"

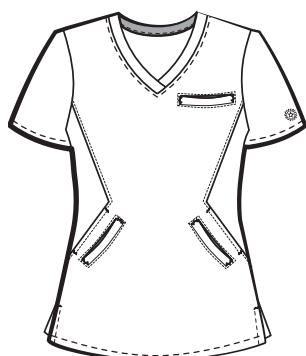
Features:

Set-In Sleeves / **5 Pockets:**
Two Lower Angled On Seam
Pockets with Two Angled Welt
Pockets and Welt Pocket on
Chest / Side Vents

55% Cotton
42% Polyester
3% Spandex
STRETCH

Sizes: XXS-5X

*For Black with Red Combo use
Style 99021



Front



Back



 Side vent for easy movement all day long.

 Angled back detail is ready for action!

 Bar tacks and double stitching for strength and good looks!



“ These fit great and are lightweight and sooo comfortable. Great for those long 12 hour shifts. Washed well too.
-Christine T, Greensboro, NC ”



19034
BIO Grommet V-Neck

Length: 25½"

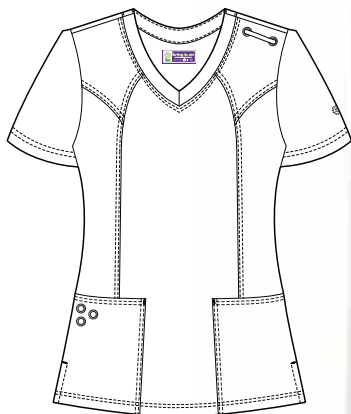
Features:


Set-In Sleeves / Front Princess Seams /
 Grommet Detail with Twill Tape Badge
 Holder / **2 Roomy Patch Pockets with
 Grommet Detail** / Side Vents

55% Cotton
42% Polyester
3% Spandex
 STRETCH

Sizes: XXS-5X

- 1255 Latte
- 064 Royal
- 015 Black
- 1054 Pewter
- 054 New Navy
- 1031 Galaxy Blue



 **Fashion and Function**
 - whether you use the
 grommet detail as a
 badge holder or not



See page 13 for
 matching
 grommet pant.

“ My BIO Scrubs top has been through a zillion washes and still looks new!
-Traci Anderson ”



19337
BIO Everyday
Warm-Up Jacket

Length: 27"

Features:

Set-In Sleeves / **3 Pockets:** Two Rounded Patch Pockets with One Small Welt Pocket
5 Snap Closure

55% Cotton
42% Polyester
3% Spandex
STRETCH

Sizes: XXS-5X

- 011 White
- 015 Black
- 1054 Pewter
- 064 Royal
- 054 New Navy
- 080 Caribbean**
- 038 Wine**

**WSL = While supplies last





See page 6 for matching top!

19215 BIO Pure Comfort Pant

Inseam: 32"

Petite: 30"

Tall: 34"

Features:

16" Leg Opening / Yoga Inspired Comfort

Waistband with Full Twill Tape Belt / **4**

Pockets: 2 Hip Pockets and Double Cargo Pocket with Twill Tape Tool Holder






55% Cotton

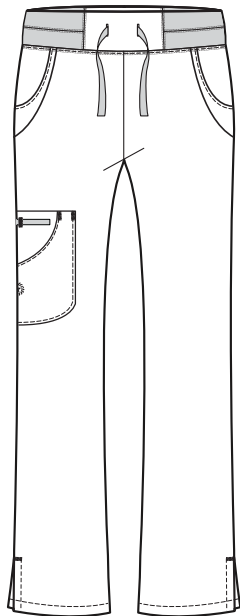
42% Polyester

3% Spandex

STRETCH

Sizes: XXS-5X, XSP-2XP, XST-2XT

-  015 Black
-  1054 Pewter
-  064 Royal
-  054 New Navy
-  1031 Galaxy Blue





“ Love my BIO uniforms. Super comfortable and fit great. Love that my pants stay in place and I don't have to constantly pull them up. -Theresa M ”

19205
BIO Grommet Pant

Inseam: 31½"

Petite: 29½"

Tall: 33½"

Features:

17" Leg Opening with 2½" Side Slits / Back Elastic Waist with Front Twill Tape Drawstring / Grommet Detail with Twill Tape Badge Holder / **3 Pockets:** Two Front Hip Pockets and One Roomy Cargo Pocket

55% Cotton

42% Polyester

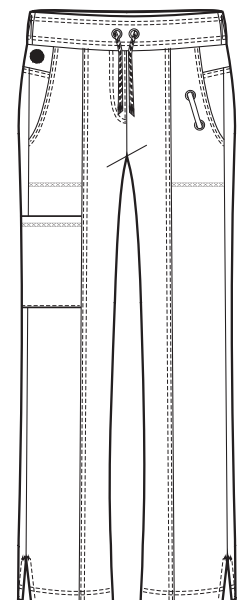
3% Spandex

STRETCH

Sizes: XXS-5X, XSP-2XP, XST-2XT

See page 10 for matching grommet top.

- 015 Black
- 054 New Navy
- 1054 Pewter
- 1031 Galaxy Blue
- 064 Royal
- 1255 Latte





19202
BIO Mega Pocket
Cargo Pant

Inseam: 31½"
Petite: 29½"
Tall: 33½"

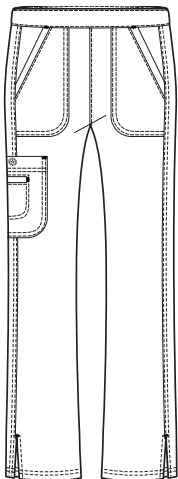
Features:

19" Leg Opening with 2½" Side Slits / Full Interior Drawstring with Back Elastic / **5 Pockets:** Two Angled Front Hip Pockets, One Back Hip Pocket, and One Roomy Cargo Pocket with Additional Welt Pocket on Top

55% Cotton
42% Polyester
3% Spandex
STRETCH

Sizes: XXS-5X, XXSP-2XP, XST-2XT

*For Black with Red Combo use Style 99202



“ I love my BIO cargo pants more than any other pair I’ve ever owned. They are so comfortable and they fit like nothing else! They fit my shape perfectly. I’m in love. Twelve hour shifts are a pleasure in these.
-Valerie K.,
Dallas, TX ”





19208 BIO Everyday Pant

Inseam: 31½"

Petite: 29½"

Tall: 33½"

Features:

18" Leg Opening with 2½" Side Slits / Full Exterior Drawstring with Back Elastic

3 Pockets: Two Front Hip Patch Pockets and One Back Hip Pocket

55% Cotton

42% Polyester

















3% Spandex

STRETCH

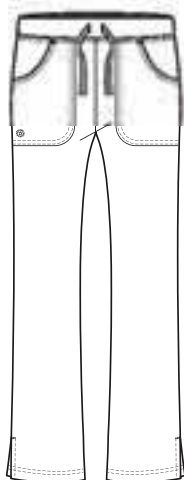
Sizes: XXS-5X, XXSP-2XP, XST-2XT



We've got you covered, in color.

- | | |
|---|--|
|  011 White |  092 Eggplant |
|  016 Red |  038 Wine |
|  1054 Pewter |  1255 Latte |
|  054 New Navy |  1031 Galaxy Blue |
|  046 Ceil |  1264 Blue Iris |
|  066 Turquoise |  015 Black |
|  1011 Azalea |  015 Black* |
|  064 Royal | |
|  000 Caribbean | |

*For Black with Red Combo use Style 99208



Hey guys – we designed this scrub set for you. From the working fly to the tailored fit, topped with a fabric that wears well throughout your day.

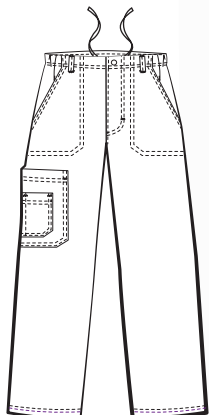
19224
BIO Men’s Ultimate Cargo Pant

Inseam: 31½"
Tall: 33½"

Features:
 19" Leg Opening / Full Drawstring Waist with Back Elastic / Working Button and Zipper Fly / **6 Pockets:** Two Angled Front Hip Pockets / Two Mitered Back Hip Pockets and Mitered Double Cargo Pocket

55% Cotton
42% Polyester
3% Spandex
 STRETCH

Sizes: S-5X, ST-2XT











19044
BIO Men’s Ultimate V-neck

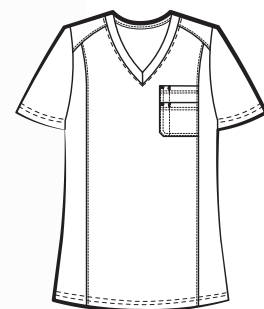
Features:
 28" Length / Set-In Sleeves / Angled Shoulder Detail and Front and Back Seaming to Maximize Fit / **2 Pockets:** Mitered Double Chest Pocket with Pencil Stitch

55% Cotton
42% Polyester
3% Spandex
 STRETCH

Sizes: S-5X

Men’s top and pant come in these solid colors:

-  **038 Wine**
-  **054 New Navy**
-  **080 Caribbean**
-  **064 Royal**
-  **015 Black**
-  **046 Ceil**
-  **1054 Pewter**
-  **092 Eggplant**



Full drawstring and working fly. Various pockets for all the storage you could ask for.

19208-066



Mix and Match

Build a wardrobe!

Color Within,
shines outward with
Black and Turquoise.

19034-015



19021-066



5081-341



19027-015



5081-341



19202-015



NEW!



19098
BIO
Mesh Top
 2 Pockets
 26" Length



19075
Sporty
V-Neck Top
 2 Pockets
 25 1/2" Length



19021
Angle "V" Top
 5 Pockets
 26" Length



19022
Modern Wrap
 3 Pockets
 26" Length



19027
Non-Contrast
 3 Pockets
 26" Length



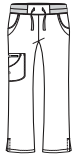
19034
Grommet Top
 2 Pockets
 25 1/2" Length



19337
Warm-Up
 3 Pockets
 27" Length

011 White			XXS-5X	XXS-5X			XXS-5X
015 Black	XXS-5X	XXS-5X	XXS-5X	XXS-5X	XXS-5X	XXS-5X	XXS-5X
016 Red			XXS-5X	XXS-5X			
046 Cell	XXS-5X		XXS-5X	XXS-5X			
054 New Navy	XXS-5X	XXS-5X	XXS-5X	XXS-5X	XXS-5X	XXS-5X	XXS-5X
064 Royal	XXS-5X	XXS-5X	XXS-5X	XXS-5X	XXS-5X	XXS-5X	XXS-5X
066 Turquoise			XXS-5X	XXS-5X			
1011 Azalea			XXS-5X	XXS-5X			
1031 Galaxy Blue	XXS-5X	XXS-5X	XXS-5X	XXS-5X	XXS-5X	XXS-5X	
1054 Pewter	XXS-5X	XXS-5X	XXS-5X	XXS-5X	XXS-5X	XXS-5X	XXS-5X
038 Wine			XXS-5X	XXS-5X			WSL XXS-5X
080 Caribbean			XXS-5X	XXS-5X			WSL XXS-5X
092 Eggplant			XXS-5X	XXS-5X			
1255 Latte			XXS-5X	XXS-5X		XXS-5X	
1264 Blue Iris			XXS-5X	XXS-5X			
015 Black			XXS-5X	XXS-5X			

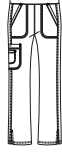
* Black with Red Combo available in styles 99021, 99022, 99202 & 99208
 *WSL = While Supplies Last



19215
Pure Comfort
Pant
4 Pockets
32 ½" Std. Inseam



19205
Grommet
Pant
3 Pockets
32 ½" Std. Inseam



19202
Mega
Cargo
5 Pockets
31 ½" Std. Inseam



19208
Everyday
Pant
3 Pockets
31 ½" Std. Inseam

Mens Collection



19044
Ultimate V-Neck
2 Pockets
28" Length



19224
Ultimate
Pant
5 Pockets
31 ½" Std. Inseam

011 White			XXS-5X; XXSP-2XP; XST-2XT	XXS-5X; XXSP-2XP; XST-2XT		
015 Black	XXS-5X; XSP-2XP; XST-2XT	XXS-5X; XSP-2XP; XST-2XT	XXS-5X; XXSP-2XP; XST-2XT	XXS-5X; XXSP-2XP; XST-2XT	S-5X	S-5X; ST-2XT
016 Red			XXS-5X; XXSP-2XP; XST-2XT	XXS-5X; XXSP-2XP; XST-2XT		
046 Cell			XXS-5X; XXSP-2XP; XST-2XT	XXS-5X; XXSP-2XP; XST-2XT	S-5X	S-5X; ST-2XT
054 New Navy	XXS-5X; XSP-2XP; XST-2XT	XXS-5X; XSP-2XP; XST-2XT	XXS-5X; XXSP-2XP; XST-2XT	XXS-5X; XXSP-2XP; XST-2XT	S-5X	S-5X; ST-2XT
064 Royal	XXS-5X; XSP-2XP; XST-2XT	XXS-5X; XSP-2XP; XST-2XT	XXS-5X; XXSP-2XP; XST-2XT	XXS-5X; XXSP-2XP; XST-2XT	S-5X	S-5X; ST-2XT
066 Turquoise			XXS-5X; XXSP-2XP; XST-2XT	XXS-5X; XXSP-2XP; XST-2XT		
1011 Azalea			XXS-5X; XXSP-2XP; XST-2XT	XXS-5X; XXSP-2XP; XST-2XT		
1031 Galaxy Blue	XXS-5X; XSP-2XP; XST-2XT	XXS-5X; XSP-2XP; XST-2XT	XXS-5X; XXSP-2XP; XST-2XT	XXS-5X; XXSP-2XP; XST-2XT		
1054 Pewter	XXS-5X; XSP-2XP; XST-2XT	XXS-5X; XSP-2XP; XST-2XT	XXS-5X; XXSP-2XP; XST-2XT	XXS-5X; XXSP-2XP; XST-2XT	S-5X	S-5X; ST-2XT
038 Wine			XXS-5X; XXSP-2XP; XST-2XT	XXS-5X; XXSP-2XP; XST-2XT	S-5X	S-5X; ST-2XT
080 Caribbean			XXS-5X; XXSP-2XP; XST-2XT	XXS-5X; XXSP-2XP; XST-2XT	S-5X	S-5X; ST-2XT
092 Eggplant			XXS-5X; XXSP-2XP; XST-2XT	XXS-5X; XXSP-2XP; XST-2XT	S-5X	S-5X; ST-2XT
1255 Latte		XXS-5X; XSP-2XP; XST-2XT	XXS-5X; XXSP-2XP; XST-2XT	XXS-5X; XXSP-2XP; XST-2XT		
1264 Blue Iris			XXS-5X; XXSP-2XP; XST-2XT	XXS-5X; XXSP-2XP; XST-2XT		
015 Black			XXS-5X; XXSP-2XP; XST-2XT	XXS-5X; XXSP-2XP; XST-2XT		

* Black with Red Combo available in styles 99021, 99022, 99202 & 99208





Our BIO print tops offer a great way to freshen up your inventory or wardrobe. Bio is grounded in offering luxurious fabrics, extensive size ranges XXS-5X, competitively priced and match all 3 of our brands' color palettes. (BIO, Fundamentals and Jockey).

New prints include:

Color Within (style # 5081-341) is a multi-colored abstract dot print on a rich Black ground.

Cut Out (style # 5219-3227) is a crisp stamped block print, perfectly match the Black/Turquoise BIO twinning combination.

Beachscape (style #5372-343) is a crisp White ground print with New Navy, Teal and Caribbean shapes. Look close enough and you may see abstract sailboats.

Etched Details (style # 5441-3261) A textured Black ground floral reveals bright accents from within, a sophisticated take on children's scratch art.

Cutting Edge (style #5569-3461) is a colorful kaleidoscope of fractured shapes in blues and greens.

Purple Punch (style # 5962-342) is a beautiful animal/floral matching 7 colors: White, Black, Latte, Blue Iris, Azalea, Eggplant and Orchid.





Cutout (3227)

5219 Contrast Edged V-Neck Top

Features:

26" Length / Contrast Edged
V-Neck / **3 Pockets:** 2 Roomy
Patch Pockets and 1 Contrast Cell
Pocket / Side Vents

97% Cotton
3% Spandex
Stretch Cotton

Sizes: XXS-5X

WEAR WITH:

- 011 White
- 015 Black
- 066 Turquoise



Stretch





Cutting Edge (3461)

5569

Contrast Curved Placket Top

Features:

26" Length / **2 Curved Patch Pockets** / Curved Hem with Side Vents

97% Cotton
3% Spandex
Stretch Cotton

Sizes: XXS-5X

WEAR WITH:

- 011 White
- 015 Black
- 064 Royal
- 1031 Galaxy Blue
- 066 Turquoise
- 1054 Pewter
- 1004 Charcoal
- 054 New Navy
- 080 Caribbean



Stretch





Etched Details (3261)

5441 Shaped V-Neck Top

Features:

26" Length / Shaped V-Neck

2 On-Seam Pockets / Side Vents

Sizes: XXS-5X

100% Cotton Sateen

WEAR WITH:

- 015 Black
- 066 Turquoise
- 064 Royal
- 1004 Charcoal
- 038 Wine
- 1210 Orchid





Purple Punch (342)

5962

Shaped Neckline Top

Features:

26" Length / Shaped Neckline with 2 Non-Functional Buttons / **2 Welt Pockets** / Rounded Hem in Front and Modern Shirttail Hem in Back

100% Cotton Sateen

Sizes: XXS-5X

WEAR WITH:

- 011 White
- 015 Black
- 1255 Latte
- 1011 Azalea
- 1264 Blue Iris
- 1210 Orchid





Color Within (341)

5081 Angle Pocket V-Neck Top

Features:

26" Length / **3 Pockets:** 2 Angled Patch Pockets with 1 Angled Cell Pocket Side Vents

100% Cotton Brushed Poplin

Sizes: XXS-5X

WEAR WITH:

- 011 White
- 015 Black
- 1231 Posh Pink
- 1031 Galaxy Blue
- 064 Royal 046 Ceil
- 1107 Key Lime 122 Purple
- 1054 Pewter 1210 Orchid





Beachscape (343)

5372 Mock Wrap Top

Features:

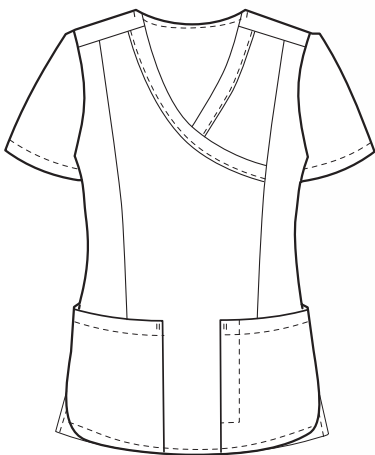
26" Length / Rounded Hem in Front and Modern Shirttail Hem in Back / **3 Pockets:** 2 Roomy Patch Pockets- 1 Hidden Cell Pocket / Side Vents

100% Cotton Sateen

Sizes: XXS-5X

WEAR WITH:

- 011 White
- 054 New Navy
- 080 Caribbean
- 017 Teal



Mix and Match - Quick Reference

Etched Details

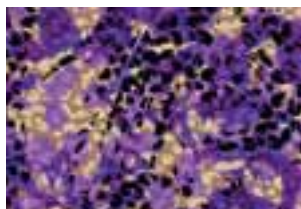
5441-3261
pg. 23



015 Black	066 Turquoise	064 Royal
1004 Charcoal	038 Wine	1210 Orchid

Purple Punch

5962-342
pg. 24



015 Black	011 White	1255 Latte
1011 Azalea	1264 Blue Iris	1210 Orchid

Color Within

5081-341
pg. 25



015 Black	011 White	1231 Posh Pink	064 Royal	1107 Key Lime
1054 Pewter	1031 Galaxy Blue	046 Ceil	122 Purple	1210 Orchid

Beachscape

5372-343
pg. 26



011 White	054 New Navy
080 Caribbean	017 Teal

Cutout

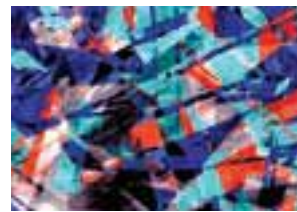
5219-3227
pg. 21



015 Black	011 White	066 Turquoise
-----------	-----------	---------------

Cutting Edge

5569-3461
pg. 22



015 Black	011 White	064 Royal	1031 Galaxy Blue	066 Turquoise
1054 Pewter	1004 Charcoal	054 New Navy	080 Caribbean	

Ladies Size Chart - BIO Prints

LADIES	XXS	XS	S	M	L
Size	0-2	4-6	8-10	12-14	16-18
Bust	31-32	33-34	35-36	37½-39	40½-42½
Waist	22-23	24-25	26-27	28½-30	31½-33½
Hips	32½-33½	34½-35½	36½-37½	39-40½	42-44

LADIES	XL	2X	3X	4X	5X
Size	20-20W	22W-24W	26W-28W	30W-32W	34W-36W
Bust	44½-46½	48½-50½	52½-54½	56½-58½	60½-62½
Waist	35½-37½	39½-41½	43½-45½	47½-49½	51½-53½
Hips	46-48	50-52	54-56	58-60	62-64

Colorful and cheerful...BIO prints are full of energizing colors to propel you through long hours of the day.



Wardrobe Building across collections



fundamentals

Did you know that our brands are designed to work with each other, to maximize your wardrobe even more?



5569-3461



14371-011

19208-066

14364-015



14712-011



Where wardrobes become complete

fundamentals[®]



fundamentals

F3: STYLE

Fit. Fashion. Fun:

Get a professional look that has just enough details to be fun and still meet most dress codes. Affordable fashion that comes in a wide range of sizes.



fundamentals

F3: TOPS

Fit. Fashion. Fun:

Great shape and chic details create a scrub that flatters every woman's figure and wardrobe.



fundamentals

F3: PANTS

Fit. Fashion. Fun:

Tailored for a long and lean look. No excess fabric for a slenderizing silhouette that's still comfortable and has plenty of room to move.



fundamentals®

14364

Overlap V-Neck Top

Features:

26" Length / **3 Pockets** - 1
Hidden Cell Pocket / Side Vents
Non-Contrast

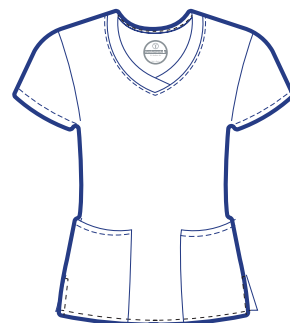
65% Polyester / **35%** Cotton
Poplin with Soil Release

Sizes: XXS-7X

- 011 White
- 015 Black
- 046 Ceil
- 017 Teal
- 054 New Navy
- 064 Royal
- 1031 Galaxy Blue
- 016 Red
- 038 Wine
- 080 Caribbean
- 122 Purple
- 034 Hunter
- 014 Navy
- 1054 Pewter
- 1004 Charcoal

***While Supplies Last**

- 1260 Ocean



14364
122

14712
122





fundamentals

SIZES:
XXS-7X
Avl. in:
14364, 14700,
14900
& 14920

14700

Ladies 2 Pocket Top

Features:

28" Length / Set-In Sleeves
2 Roomy Patch Pockets / Side Slits
Non-Contrast

65% Polyester / **35%** Cotton
Poplin with Soil Release

Sizes: XXS-7X

- 011 White
- 015 Black
- 017 Teal
- 1054 Pewter
- 054 New Navy
- 064 Royal
- 1031 Galaxy Blue
- 016 Red
- 038 Wine
- 080 Caribbean
- 122 Purple
- 034 Hunter
- 078 Seaspray
- 1246 Sand
- 014 Navy
- 1004 Charcoal



**14700
054**



**14720
054**





fundamentals®

14371

Smiley Pocket Top

Features:

26" Length / Front Princess Seams / Modern Wrap with Shirttail Bottom / **5 Pockets** - 2 Deep Top Loading Pockets with 2 Hidden Contrasted Smiley Pockets and 1 Hidden Cell Pocket Side Vents / Contrast Bartacks and Embroidered Logo

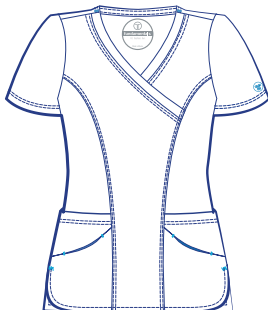
65% Polyester / 35% Cotton Poplin with Soil Release

Sizes: XXS-5X

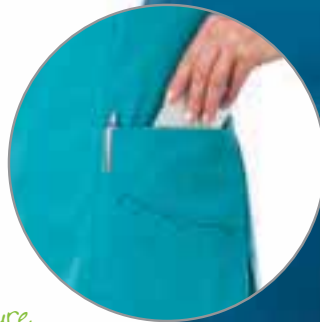
- 054 New Navy
- 080 Caribbean
- 1004 Charcoal
- 064 Royal
- 016 Red
- 1031 Galaxy Blue
- 046 Ceil
- 034 Hunter
- 038 Wine
- 011 White
- 015 Black
- 122 Purple
- 017 Teal
- 014 Navy
- 1054 Pewter

***While Supplies Last**

- 1210 Orchid
- 1260 Ocean



Signature smiley pocket and hidden cell pocket



14371
080

14750
080



fundamentals®

14524

Favorite Fit Top

Features:

26" Length / Front and Back Princess Seams / Bound Edge V-Neck / **6 Pockets** - 2 Deep Top-Loading Pockets, Pockets on Top and Small Double Pocket on Sleeve / Side Vents / Contrast Embroidered Logo

65% Polyester / 35% Cotton
Poplin with Soil Release

Sizes: XXS-5X

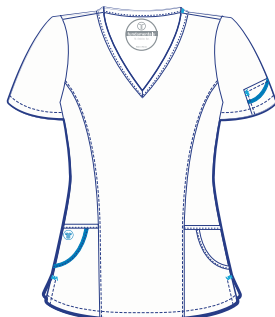
Contrast colors in all the right places.

14524
1054

Ample space for embroidery

WHILE SUPPLIES LAST

- | | | | |
|--|--------------|--|----------------|
| | 015 Black | | 1231 Posh Pink |
| | 046 Ceil | | 1260 Ocean |
| | 054 New Navy | | 034 Hunter |
| | 064 Royal | | 038 Wine |
| | 1054 Pewter | | 080 Caribbean |
| | 1210 Orchid | | 122 Purple |



14546
1054





fundamentals®

14740

Ladies Warm-Up Jacket

Features:

28" Length / Set-In Sleeves / Front and Back Princess Seams / Snap Front Closure / Color Matching Knit Cuffs / **2 Deep Patch Pockets** / Non-Contrast

65% Polyester / 35% Cotton
Poplin with Soil Release

Sizes: XS-5X

- 011 White
- 015 Black
- 046 Ceil
- 017 Teal
- 054 New Navy
- 1031 Galaxy Blue
- 1004 Charcoal
- 080 Caribbean
- 034 Hunter
- 014 Navy
- 1054 Pewter
- 038 Wine
- 064 Royal

14740
034



GREAT FOR GROUPS!



14712
034



WHILE SUPPLIES LAST

14239
064



Tagless Neck Label

Layering Pieces

14239 Layering T-Shirt

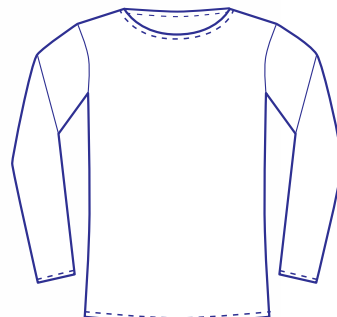
Features:

Long Sleeves / Rounded Neck

95% Cotton

5% Spandex Knit

Sizes: XS-3X



016
Red

064
Royal

054
New Navy

038
Wine

034
Hunter

015
Black

122
Purple

1031
Galaxy
Blue

046
Ceil

032
Grey

1059
Paris Pink

1054
Pewter

066
Turquoise

1011
Azalea





fundamentals®

14720

Ladies Cargo Pant

Inseam: 31",

Petite: 29"

Tall: 33"

Features:

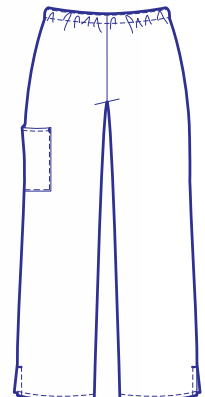
18" Straight Leg Opening / Covered Full Elastic Waist Pant / **1 Cargo Pocket** / Side Vents / Non-Contrast

65% Polyester / **35%** Cotton

Poplin with Soil Release

Sizes: XXS-5X, XXSP-3XP, XST-XLT

- | | |
|--|---|
|  011 White |  080 Caribbean |
|  015 Black |  122 Purple |
|  046 Ceil |  034 Hunter |
|  017 Teal |  014 Navy |
|  054 New Navy |  1054 Pewter |
|  064 Royal |  1004 Charcoal |
|  1031 Galaxy Blue |  078 Seaspray |
|  016 Red |  1246 Sand |
|  038 Wine | |



14720
054



fundamentals®

14712

The Professional Pant

Inseam: 31½"

Petite: 29½"

Tall: 33½"

Features:

19" Slight Flare Leg Opening / Mid-Rise Full Drawstring, Back Elastic Waist / **2 Roomy Hip Pockets** / Side Vents / Non-Contrast

65% Polyester / **35%** Cotton

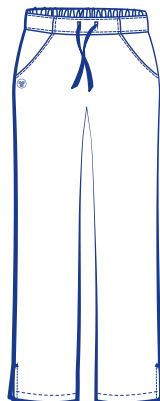
Poplin with Soil Release

Sizes: XXS-5X, XXSP-2XP, XST-2XT

- 011 White
- 015 Black
- 046 Ceil
- 017 Teal
- 054 New Navy
- 064 Royal
- 1031 Galaxy Blue
- 016 Red
- 038 Wine
- 080 Caribbean
- 122 Purple
- 034 Hunter
- 014 Navy
- 1054 Pewter
- 1004 Charcoal
- 078 Seaspray
- 1246 Sand

***While Supplies Last**

- 1231 Posh Pink
- 1260 Ocean
- 1210 Orchid



**14712
078**





fundamentals®

14750

Flip for Fun Pant

Inseam: 31½"

Petite: 29½"

Tall: 33½"

Features:








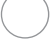




18" Boot Cut Leg Opening / Mid-Rise Convertible Comfort Waist Pant - Wear Flat or Flip Down / Two-Toned Waist Band / **4 Pockets** - 2 Roomy Hip Pockets, / 1 Cargo Pocket and 1 Angled Cell Pocket / Side Vents / Contrast Bartacks and Embroidered Logo

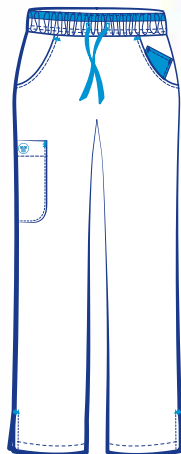
65% Polyester / **35%** Cotton

Poplin with Soil Release

Sizes: XXS-5X, XXSP-2XP, XST-2XT

WHILE SUPPLIES LAST

-  **1231** Posh Pink
-  **064** Royal
-  **1260** Ocean
-  **1031** Galaxy Blue
-  **046** Ceil
-  **034** Hunter
-  **038** Wine
-  **011** White
-  **017** Teal
-  **122** Purple
-  **080** Caribbean
-  **1210** Orchid



**14750
064**



fundamentals®

14546
038

14546

The Metro Pant

Inseam: 31½"

Petite: 29½"

Tall: 33½"

Features:




19" Slight Flare Leg Opening / Mid-Rise Full Drawstring, Back Elastic Waist / **5 Stacked Contrast Bound Edge Pockets** / Side Vents / Contrast Bartacks and Embroidered Logo

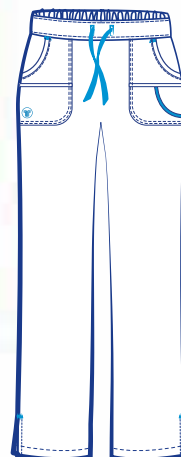
65% Polyester / **35%** Cotton

Poplin with Soil Release

Sizes: XXS-5X, XXSP-2XP, XST-2XT

WHILE SUPPLIES LAST

- | | |
|---|--|
|  054 New Navy |  080 Caribbean |
|  1231 Posh Pink |  064 Royal |
|  1260 Ocean |  034 Hunter |
|  046 Ceil |  011 White |
|  038 Wine |  122 Purple |
|  017 Teal |  1210 Orchid |
|  1054 Pewter | |





fundamentals

14231

Classic Skirt

Elastic Waist Skirt

Features:

30" Length / **2 Pockets** / 1" Elastic Waist
Back Kick Pleat / Side Vents

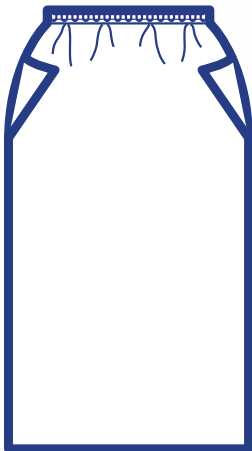
65% Polyester / 35% Cotton

Poplin with Soil Release

Sizes: XXS-5X

- 011 White
- 015 Black
- 046 Ceil
- 064 Royal
- 038 Wine
- 014 Navy
- 1246 Sand

14231
014





fundamentals®

SIZES:
XXS-7X
Avl. in:
14364, 14700,
14900
& 14920

Unisex

14900

Unisex One Pocket Top

Features:

29" Length / Set-In Sleeves / **1 Chest Pocket with Pen Slit** / Non-Contrast

65% Polyester / **35%** Cotton

Poplin with Soil Release

Sizes: XXS-7X

14920

Unisex Drawstring Pant

Inseam 31" / Short: 28" / Tall: 33"

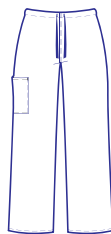
Features:

18" Leg Opening / Full Drawstring Waist / **2 Pockets** — 1 Cargo Pocket and 1 Back Hip Pocket / Non-Contrast

65% Polyester / **35%** Cotton

Poplin with Soil Release

Sizes: XXS-7X, XSSH-3XSH, XST-2XT



**14900
080**

**14920
080**

○ 011 White

● 015 Black

● 046 Ceil

● 017 Teal

● 054 New Navy

● 064 Royal

● 1031 Galaxy Blue

● 016 Red

● 038 Wine

● 080 Caribbean

● 122 Purple

● 034 Hunter

● 014 Navy

● 1054 Pewter

● 1004 Charcoal

● 078 Seaspray

● 1246 Sand

***While Supplies Last**
● 1210 Orchid





fundamentals®

Unisex



14869
046

14869

Unisex Three Pocket Top

Features:

29" Length / Set-In Sleeves / **3 Pockets** - 2 Deep Patch Pockets, / 1 Chest Pocket with Pen Slit / Non-Contrast

65% Polyester / **35%** Cotton

Poplin with Soil Release

Sizes: XS-5X

14843

Unisex Five Pocket Pant

Inseam: 30½"

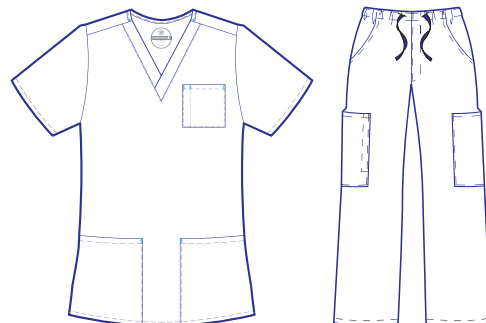
Features:

18" Leg Opening / Drawstring with Elastic Waist / **5 Pockets** - 2 Cargo Pockets, / 2 Front Hip Pockets and / 1 Back Hip Pocket Non-Contrast

Sizes: XS-5X, XSSH-2XSH, XST-2XT

- 011 White
- 015 Black
- 046 Ceil
- 054 New Navy
- 064 Royal
- 038 Wine
- 034 Hunter
- 014 Navy
- 1054 Pewter
- 1004 Charcoal

14843
046





14755

Unisex Four Pocket Warmup Jacket

Features:

31" Length / **4 Pockets** - 2 Roomy Lower Miter Edge Pocket, 1 Miter Edge Chest Pocket & 1 Hidden Media Pocket / Soft Stretch Rib Knit Cuffs / Zipper Front

65% Polyester / 35% Cotton

Poplin with Soil Release

Sizes: XS-5X

- 011 White
- 015 Black
- 046 Ceil
- 054 New Navy
- 064 Royal
- 1031 Galaxy Blue
- 038 Wine
- 017 Teal
- 080 Caribbean
- 034 Hunter
- 014 Navy
- 1054 Pewter
- 1004 Charcoal

14755
054



14560

Ladies Snap Front Top

Features:

25" Length / **2 Roomy On-Seam Top Loading Pockets** / 5 Color Matching Snaps / Front Princess Seams

65% Polyester / 35% Cotton
Poplin with Soil Release

Sizes: XXS-5X

White-011

14568

Collared Button Front Top

Features:

26" Length / 5 Color Matching Buttons / **2 Roomy Pockets** / Front Darts / Back Yoke with Box Pleat

65% Polyester / 35% Cotton
Poplin with Soil Release

Sizes: XXS-5X

White-011





fundamentals®



14563

Heavy-Weight Twill Pant

Inseam: 31 ½"

Petites: 29 ½"

Tall: 33 ½"

Features:

18" Leg Opening / Full Elastic Waist / **4 Pockets**
- 2 Hip & 2 Cargo

65% Polyester / 35% Cotton

Fine Line Twill with Soil Release

Sizes: XXS-5X, XSP-2XP, XST-2XT

White-011



14752

**Hidden Placket Button
Front Vest**

Features:

26" Length / 4 Button Closure with Hidden
Placket / **4 Angled Pockets**

65% Polyester / 35% Cotton

Fine Line Twill with Soil Release

Sizes: XXS-5X

White-011



Classic Whites

10

1-Button Nurses Cap

Features:

Permanent No Starch Crisp Finish

Sold in Dozen Quantities Only

100% Cotton with Soil Release

Sizes: One Size Fits All



14740
pg 34

20

2-Button Nurses Cap

Features:

Permanent No Starch Crisp Finish

Sold in Dozen Quantities Only

100% Cotton with Soil Release

Sizes: One Size Fits All



14900
pg 41

14364
pg 30

14700
pg 31



14712
pg 37

14720
pg 36

14920
pg 41

14231
pg 40



Maternity Scrubs



14375

Maternity Mock Wrap Top with Stretch Side Panels

Features:

26 1/2" Length / **3 Pockets** - 1 Hidden Cell Pocket / Stretch Side Panels / Adjustable Drawstring at Empire Waist

65% Polyester / **35%** Cotton

Poplin with Soil Release and

81% Cotton / **19%** Lycra Side Panels

Sizes: XS-3X

14378

Maternity Pant with Stretch Panel

Inseam: 32"

Features:

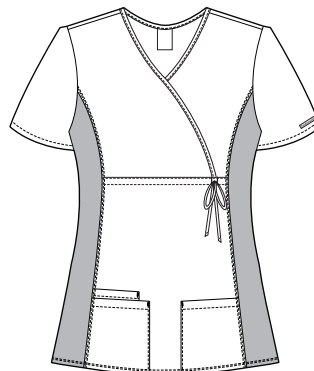
19" Slight Flare Leg Opening / 1 Welt Cargo Pocket / Front & Back Stretch Panel / Side Vents

65% Polyester / **35%** Cotton

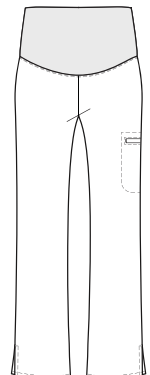
Poplin with Soil Release and

81% Cotton / **19%** Lycra Tummy Panel

Sizes: XS-3X



- 015 Black
- 054 New Navy
- 064 Royal
- 038 Wine
- 014 Navy





14373
406



14373

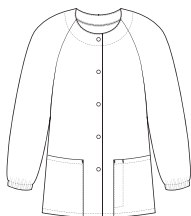
Raglan Sleeve Warm-Up Jacket

Features:

29" Length / Raglan Sleeves with Round Neckline / 5 Snap Closure **3 Pockets** - 2 Patch - 1 with Pen Stitch and 1 Hidden Cell pocket

55% Cotton / 45% Polyester
Cotton Rich Brushed Poplin

Sizes: XXS-5X



14354
406



14354

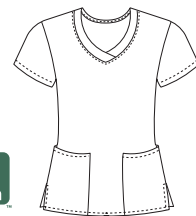
Overlap V-Neck Top

Features:

26" Length / **3 Pockets** - 1 Hidden Cell Pocket / Side Vents

55% Cotton / 45% Polyester
Cotton Rich Brushed Poplin

Sizes: XXS-5X



Matching Pant Colors:



406 - On the Horizon Dusk

● 1231 Posh Pink
○ 011 White

● 054 New Navy
● 064 Royal

● 1258 Shocking Pink
● 046 Ceil





14354
442



14373
442



14354

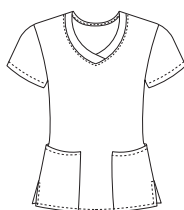
Overlap V-Neck Top

Features:

26" Length / **3 Pockets** - 1 Hidden Cell Pocket / Side Vents

55% Cotton / 45% Polyester
Cotton Rich Brushed Poplin

Sizes: XXS-5X



14373

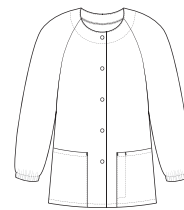
Raglan Sleeve Warm-Up Jacket

Features:

29" Length / Raglan Sleeves with Round Neckline
5 Snap Closure / **3 Pockets** - 2 Patch - 1 with Pen Stitch and 1 Hidden Cell pocket

55% Cotton / 45% Polyester
Cotton Rich Brushed Poplin

Sizes: XXS-5X



Matching Pant Colors:



442 - On the Horizon Dawn



011 White



080 Caribbean



017 Teal



1210 Orchid



WHILE SUPPLIES LAST



14372
2535



14373
2535

14372

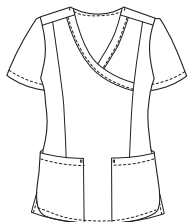
Mock Wrap Top

Features:

26" Length / Rounded Hem in Front and Modern Shirrtail Hem in Back / **3 Pockets** - 1 Hidden Cell Pocket / Side Vents

55% Cotton / 45% Polyester
Cotton Rich Brushed Poplin

Sizes: XXS-5X



14373

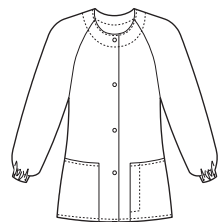
Raglan Sleeve Warm-Up Jacket

Features:

29" Length / Raglan Sleeves with Round Neckline
5 Snap Closure / **3 Pockets** - 2 Patch - 1 with Pen Stitch and 1 Hidden Cell pocket

55% Cotton / 45% Polyester
Cotton Rich Brushed Poplin

Sizes: XXS-5X



Matching Pant Colors:



2535 - Jellybean Navy

○ 011 White

● 1107 Key Lime

● 1031 Galaxy Blue

● 046 Ceil

● 064 Royal

● 017 Teal

● 1210 Orchid

● 054 New Navy

● 080 Caribbean

WHILE SUPPLIES LAST



14372
2536



14373
2536

14372

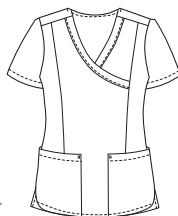
Mock Wrap Top

Features:

26" Length / Rounded Hem in Front and Modern / Shirttail Hem in Back / **3 Pockets** - 1 Hidden Cell Pocket / Side Vents

55% Cotton / 45% Polyester
Cotton Rich Brushed Poplin

Sizes: XXS-5X



14373

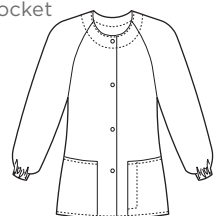
Raglan Sleeve Warm-Up Jacket

Features:

29" Length / Raglan Sleeves with Round Neckline / 5 Snap Closure / **3 Pockets** - 2 Patch - 1 with Pen Stitch and 1 Hidden Cell pocket

55% Cotton / 45% Polyester
Cotton Rich Brushed Poplin









Sizes: XXS-5X



Matching Pant Colors:



2536 - Jellybean Purple

-  **011 White**
-  **1054 Pewter**
-  **064 Royal**
-  **122 Purple**
-  **1031 Galaxy Blue**
-  **1210 Orchid**
-  **1231 Posh Pink**
-  **1011 Azalea**

WHILE SUPPLIES LAST

14373
2537



14372
2537



14373

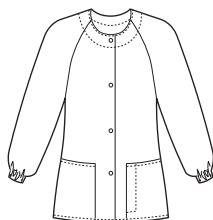
Raglan Sleeve Warm-Up Jacket

Features:

29" Length / Raglan Sleeves with Round Neckline
5 Snap Closure / **3 Pockets** - 2 Patch - 1 with Pen
Stitch and 1 Hidden Cell pocket

55% Cotton / 45% Polyester
Cotton Rich Brushed Poplin

Sizes: XXS-5X



14372

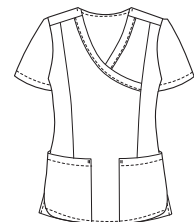
Mock Wrap Top

Features:

26" Length / Rounded Hem in Front and Modern
Shirrtail Hem in Back / **3 Pockets** - 1 Hidden Cell
Pocket / Side Vents

55% Cotton / 45% Polyester
Cotton Rich Brushed Poplin

Sizes: XXS-5X



Matching Pant Colors:



2537 - Jellybean Black

- 011 White
- 015 Black
- 017 Teal

- 080 Caribbean
- 122 Purple
- 1054 Pewter

- 1210 Orchid

WHILE SUPPLIES LAST



14374
2596



14866
2596

14374

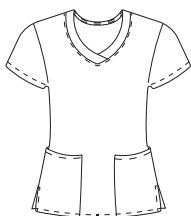
Overlap V-Neck Top

Features:

26" Length / **3 Pockets** - 1 Hidden Cell Pocket / Side Vents

55% Cotton / 45% Polyester
Cotton Rich Brushed Poplin

Sizes: XXS-5X



14866

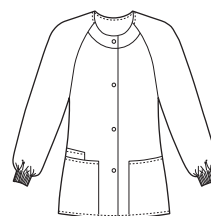
Raglan Sleeve Warm-Up Jacket

Features:

30" Length / Color Match Rib Knit Cuffs / 4 Snap Closure / **3 Pockets** - 1 Cell pocket

55% Cotton / 45% Polyester
Cotton Rich Brushed Poplin

Sizes: XXS-5X



Matching Pant Colors:



2596 - Toadally Dental

- 015 Black
- 011 White

- 046 Ceil
- 064 Royal

- 016 Red
- 1107 Key Lime



LADIES TOPS



14364
26" Overlap V-Neck
XXS-7X

CONTRASTING COLOR



14371
26" Smiley Pocket
Modern Wrap
XXS-5X



14700
28" 2-Pkt. Top
XXS-7X

LADIES JACKETS




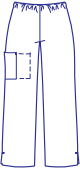



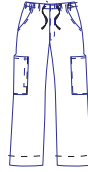
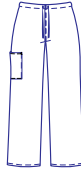
14740
28" Warm-Up Jacket
XS-5X

LADIES SKIRT



14231
30" Elastic Waist
Skirt XXS-5X

011 White	011 White	011 White	011 White	011 White	011 White
014 Navy	014 Navy	014 Navy	014 Navy	014 Navy	014 Navy
015 Black	015 Black	015 Black	015 Black	015 Black	015 Black
016 Red	016 Red	016 Red	016 Red		
017 Teal	017 Teal	017 Teal	017 Teal	017 Teal	
034 Hunter	034 Hunter	034 Hunter	034 Hunter	034 Hunter	
038 Wine	038 Wine	038 Wine	038 Wine	038 Wine	038 Wine
046 Ceil	046 Ceil	046 Ceil	046 Ceil	046 Ceil	046 Ceil
054 New Navy	054 New Navy	054 New Navy	054 New Navy	054 New Navy	
064 Royal	064 Royal	064 Royal	064 Royal	064 Royal	064 Royal
078 Seaspray			078 Seaspray		
080 Caribbean	080 Caribbean	080 Caribbean	080 Caribbean	080 Caribbean	
122 Purple	122 Purple	122 Purple	122 Purple		
1031 Galaxy Blue	1031 Galaxy Blue	1031 Galaxy Blue	1031 Galaxy Blue	1031 Galaxy Blue	
1004 Charcoal	1004 Charcoal	1004 Charcoal	1004 Charcoal	1004 Charcoal	
1246 Sand			1246 Sand		1246 Sand
1054 Pewter	1054 Pewter	1054 Pewter	1054 Pewter	1054 Pewter	

LADIES PANTS		UNISEX JACKETS		UNISEX TOPS		UNISEX PANTS	
							
14712 Professional Pant XXS-5X; XXSP-2XP; XST-2XT	14720 Cargo Pant XXS-5X; XXSP-3XP; XST-XLT	14755 31" Warm-Up Jacket XS-5X	14869 29" 3-Pkt. Top XS-5X	14900 29" 1-Pkt. Top XXS-7X	14843 Unisex Zip Pant XS-5X, XSSH-2XSH & XST-2XT	14920 Unisex Drawstring Pant XXS-7X; XSSH- 3XSH; XST-2XT	
○ 011 White	○ 011 White	○ 011 Whitee	○ 011 White	○ 011 White	○ 011 White	○ 011 White	○ 011 White
● 014 Navy	● 014 Navy	● 014 Navy	● 014 Navy	● 014 Navy	● 014 Navy	● 014 Navy	● 014 Navy
● 015 Black	● 015 Black	● 015 Black	● 015 Black	● 015 Black	● 015 Black	● 015 Black	● 015 Black
● 016 Red	● 016 Red			● 016 Red		● 016 Red	● 016 Red
● 017 Teal	● 017 Teal	● 017 Teal		● 017 Teal		● 017 Teal	● 017 Teal
● 034 Hunter	● 034 Hunter	● 034 Hunter	● 034 Hunter	● 034 Hunter	● 034 Hunter	● 034 Hunter	● 034 Hunter
● 038 Wine	● 038 Wine	● 038 Wine	● 038 Wine	● 038 Wine	● 038 Wine	● 038 Wine	● 038 Wine
● 046 Ceil	● 046 Ceil	● 046 Ceil	● 046 Ceil	● 046 Ceil	● 046 Ceil	● 046 Ceil	● 046 Ceil
● 054 New Navy	● 054 New Navy	● 054 New Navy	● 054 New Navy	● 054 New Navy	● 054 New Navy	● 054 New Navy	● 054 New Navy
● 064 Royal	● 064 Royal	● 064 Royal	● 064 Royal	● 064 Royal	● 064 Royal	● 064 Royal	● 064 Royal
● 078 Seaspray	● 078 Seaspray			● 078 Seaspray		● 078 Seaspray	● 078 Seaspray
● 080 Caribbean	● 080 Caribbean	● 080 Caribbean		● 080 Caribbean		● 080 Caribbean	● 080 Caribbean
● 122 Purple	● 122 Purple			● 122 Purple		● 122 Purple	● 122 Purple
● 1031 Galaxy Blue	● 1031 Galaxy Blue	● 1031 Galaxy Blue		● 1031 Galaxy Blue		● 1031 Galaxy Blue	● 1031 Galaxy Blue
● 1004 Charcoal	● 1004 Charcoal	● 1004 Charcoal	● 1004 Charcoal	● 1004 Charcoal	● 1004 Charcoal	● 1004 Charcoal	● 1004 Charcoal
● 1246 Sand	● 1246 Sand			● 1246 Sand		● 1246 Sand	● 1246 Sand
● 1054 Pewter	● 1054 Pewter	● 1054 Pewter	● 1054 Pewter	● 1054 Pewter	● 1054 Pewter	● 1054 Pewter	● 1054 Pewter



LADIES Size Chart

	XXS	XS	S	M	L	XL	2X	3X	4X	5X
SIZE	0-2	4-6	8-10	12-14	16-18	20-20W	22W-24W	26W-28W	30W-32W	34W-36W
BUST	31-32	33-34	35-36	37 ½-39	40 ½-42 ½	44 ½-46 ½	48 ½-50 ½	52 ½-54 ½	56 ½-58 ½	60 ½-62 ½
WAIST	22-23	24-25	26-27	28 ½-30	31 ½-33 ½	35 ½-37 ½	39 ½-41 ½	43 ½-45 ½	47 ½-49 ½	51 ½-53 ½
HIPS	32 ½-33 ½	34 ½-35 ½	36 ½-37 ½	39-40 ½	42-44	46-48	50-52	54-56	58-60	62-64

LADIES Size Chart | Petite: 5'4" and under, Missy: 5'4 ½"

LADIES	XXS	XS	S	M	L	XL
Size	0 - 2	4 - 6	8 - 10	12 - 14	16 - 18	20 - 20W
Bust	31 - 32	33 - 34	35 - 36	37 ½ - 39	40 ½ - 42 ½	44 ½ - 46 ½
Waist	22 - 23	24 - 25	26 - 27	28 ½ - 30	31 ½ - 33 ½	35 ½ - 37 ½
Hips	32 ½ - 33 ½	34 ½ - 35 ½	36 ½ - 37 ½	39 - 40 ½	42 - 44	46 - 48

WOMEN'S Size Chart | Petite: 5'4" and under, Women: 5'4 ½" - 5'8"

WOMEN	XL	2X	3X	4X	5X
Size	20 - 20W	22W - 24W	26W - 28W	30W - 32W	34W - 36W
Bust	44 ½ - 46 ½	48 ½ - 50 ½	52 ½ - 54 ½	56 ½ - 58 ½	60 ½ - 62 ½
Waist	35 ½ - 37 ½	39 ½ - 41 ½	43 ½ - 45 ½	47 ½ - 49 ½	51 ½ - 53 ½
Hips	46 - 48	50 - 52	54 - 56	58 - 60	62 - 64

MEN'S Size Chart | Regular: 5'8" - 5'11", Long 6' - 6'3"

MENS	XS	S	M	L	XL	2X	3X	4X	5X
Size	30 - 32	34 - 36	38 - 40	42 - 44	46 - 48	50 - 52	54 - 56	58 - 60	62 - 64
Chest	30 - 32	34 - 36	38 - 40	42 - 44	46 - 48	50 - 52	54 - 56	58 - 60	62 - 64
Waist	24 - 26	28 - 30	32 - 34	36 - 38	40 - 42	44 - 46	48 - 50	52 - 54	56 - 58

UNISEX Size Chart

Size	XXS	XS	S	M	L	XL	2X	3X	4X	5X	6X	7X
Mens	26 - 28	30 - 32	34 - 36	38 - 40	42 - 44	46 - 48	50 - 52	54 - 56	58 - 60	62 - 64	66 - 68	70 - 72
Ladies	0 - 2	4 - 6	8 - 10	12 - 14	16 - 18	20W	22W - 24W	26W - 28W	30W - 32W	34W - 36W	38W - 40W	42W - 44W